

GENERAL EQUIPMENT INSPECTION DETAILS

This is an inspection that is completed by a contracted agency and represents a visual inspection of this equipment or property. Agency is not responsible for hidden damages or mechanical failures in the future of this equipment as this is a visual inspection. This inspection is completed without any warranty from the inspection. Whether it be "Expressed or Implied" This inspection report will follow with illustrations of the equipment and the written form of what we are able to visually inspect. By accepting this inspection or estimate you are agreeing indemnify, defend, save and hold harmless the the providing company of this repair/estimate, its agents and employees from all liabilities, charges, expenses and costs on account of or by reason of any such injuries, deaths, liabilities, claims, suits or losses however occurring or damages growing out of the same.

2009 CATERPILLAR D7R2

Ad Number # 8106
Year: 2009
Location: Flordia
Manufacturer: Caterpillar
Model: D7R2
VIN: CAT00D7REAEC02284
Engine: Caterpillar
Horsepower:
Transmission: Caterpillar Automatic
Mileage: 4076
Hours:
ECM Mileage:0
ECM Hours:
Running:
Inspected By:



<http://afequip.nx.gg/view/listing/8106>

Description

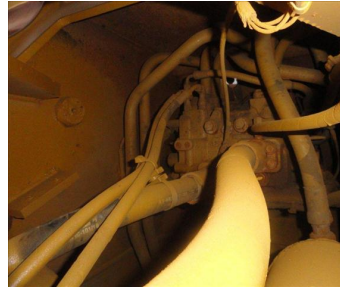
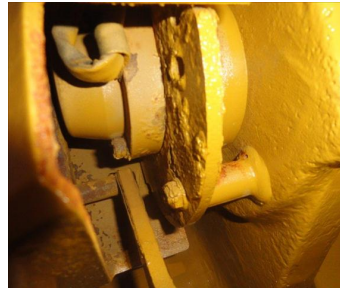
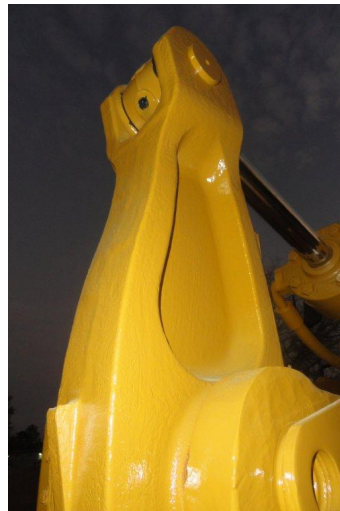
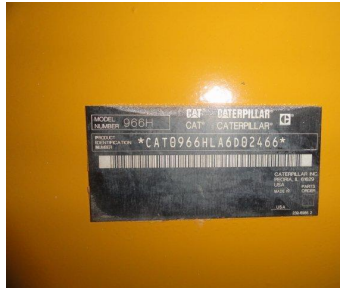
WE HAVE 4 UNITS IN THIS PACKAGE. THIS IS A PACKAGE SALE. Hours: 4,076 Cab: Enclosed
Operational: Yes Starts Easily: Yes Gauges Working: Yes Cab Glass Intact: Yes Paintwork Sound: New Paint
Rollers: 25% Worn Pad: Like New No torn

Additional Information

Physical Appearance	
AFEquip.com is not responsible for hidden damages or mechanical failures as this is only a visual inspection	
Tires or Tracks	Good Notes :-
Warning Lights	Good Notes :-
Body Condition	Good Notes :-

Mechanical Detail	
Engine Starts and Runs	Good Notes :-
Differentials and Fluids	Good Notes :-

Images



Images

