

GENERAL EQUIPMENT INSPECTION DETAILS

This is an inspection that is completed by a contracted agency and represents a visual inspection of this equipment or property. Agency is not responsible for hidden damages or mechanical failures in the future of this equipment as this is a visual inspection. This inspection is completed without any warranty from the inspection. Whether it be "Expressed or Implied" This inspection report will follow with illustrations of the equipment and the written form of what we are able to visually inspect. By accepting this inspection or estimate you are agreeing indemnify, defend, save and hold harmless the the providing company of this repair/estimate, its agents and employees from all liabilities, charges, expenses and costs on account of or by reason of any such injuries, deaths, liabilities, claims, suits or losses however occurring or damages growing out of the same.

2013 Komatsu 930E UNIT 248

Ad Number # 8177
Year: 2013
Location: Naveda
Manufacturer: Komatsu Equipment
Model: 930E
VIN: KMTHD038NGJA31599
Engine: Cummins
Horsepower:2700
Transmission: Other
Mileage: See Reports
Hours:
ECM Mileage:See Reports
ECM Hours:
Running: 1
Inspected By:



<http://afequip.nx.gg/view/listing/8177>

Description

Great condition for this unit. This mine does a great job with service and maintenance. Please refer to the record uploads. This is UNIT 248. Our opinion of this unit is that is in good shape. The bed has a few cracks but this is normal wear for this equipment. The bed is a switch out operation with lined AR 500 steel plates replaced as needed. There are approximately 5 beds in stock for switch out. The lube system is in good operation and uses a centrifuge oil filter system. We believe that these trucks are well taken care of and will be taken care of in the future if the mine is allowed to operate. All of the Cummins Insite program results shows proper repairs and a history logged in the system. We found that the equipment is properly look after and kept up to date with revisions from OEM Cummins updates.

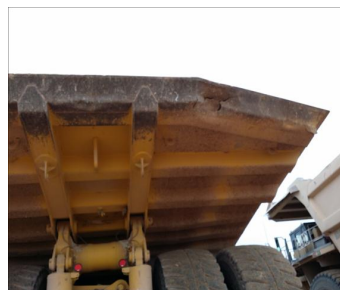
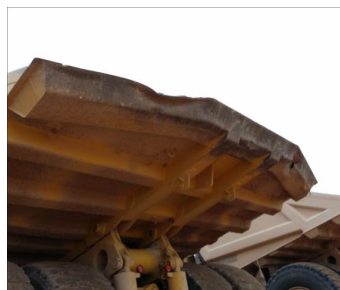
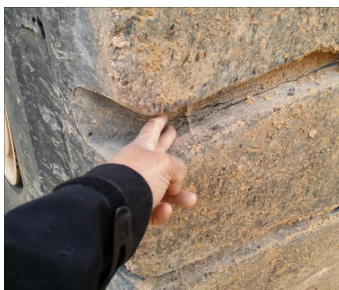
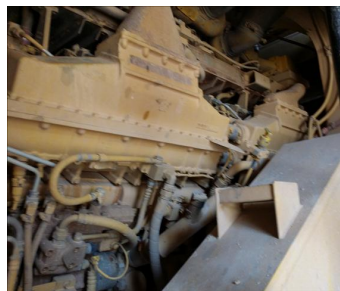
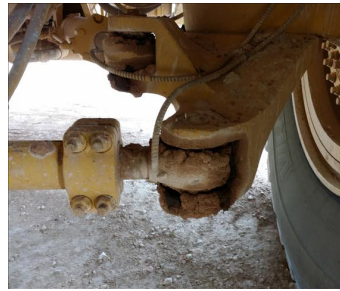
Additional Information

Physical Appearance	
AFEquip.com is not responsible for hidden damages or mechanical failures as this is only a visual inspection	
Engine Appearance (Oil Leaks Present?)	Good Notes :-
Lights All Around Equipment Condition	Good Notes :-
PAINT (ANY BODY DAMAGES OR SCRATCHES)	Ok Notes :-
Mirrors Condition	Good Notes :-
Differential Appearance (Oil Leaks Present?)	Good Notes :-
Warning Buzzers Functioning	Good Notes :-
Tires or Tracks	Good Notes :-
Warning Lights	Good Notes :-
Interior Condition (Clean Dirty or Damaged)	Ok Notes :-
Horn Operable	Good Notes :-
Body Condition	Ok Notes :-
Signal System Working Properly	Ok Notes :-
Gauges Functioning	Ok Notes :-
General Appearance of Equipment	Good Notes :-
Windshield Wipers Condition and Performance	Good Notes :-
Window Function Condition	Good Notes :-

Physical Appearance	
Dump Hoist Condition	Good Notes :-

Mechanical Detail	
Engine Starts and Runs	Good Notes :-
Steering Box Condition (oil leaks present?)	Good Notes :-
Engine Belt Condition	Good Notes :-
Wheel Visual Condition	Good Notes :-
Air Conditioning and Heating Performance	Good Notes :-
Battery Condition	Good Notes :-
Active Engine Codes	Good Notes :-
Boom or Bucket Hoist Cylinders Visual Condition	Good Notes :-
RADIATOR CONDITION	Good Notes :-

Images



Images

