

GENERAL EQUIPMENT INSPECTION DETAILS

This is an inspection that is completed by a contracted agency and represents a visual inspection of this equipment or property. Agency is not responsible for hidden damages or mechanical failures in the future of this equipment as this is a visual inspection. This inspection is completed without any warranty from the inspection. Whether it be "Expressed or Implied" This inspection report will follow with illustrations of the equipment and the written form of what we are able to visually inspect. By accepting this inspection or estimate you are agreeing indemnify, defend, save and hold harmless the the providing company of this repair/estimate, its agents and employees from all liabilities, charges, expenses and costs on account of or by reason of any such injuries, deaths, liabilities, claims, suits or losses however occurring or damages growing out of the same.

2012 Vermeer

Ad Number # 8223
Year: 2012
Location: Indiana
Manufacturer: Vermeer
Model: D20X22II
VIN: 1VR6180T0C1000742
Engine: Other
Horsepower:
Transmission: NOT APPLICABLE
Mileage: 650
Hours:
ECM Mileage:0
ECM Hours:
Running:
Inspected By:



<http://afequip.nx.gg/view/listing/8223>

Description

We have 3 complete units ready to be put into service. Please call us at 317 938 2019 for additional information on these units. Hrs: 643 Vermeer Inspected unit in May 2015 Additional Details available upon request Unit includes: MIXER UNIT MX 240 1VR6120P4C1001442 Last engine service: 1/29/15 Machine ran good Items Checked: Oil level - ok Grease cup - ok Bolts for tightness - ok Battery cover - ok Hoses and ball valves – ok MIXER UNIT MX 240 1VR6120PC1001485 Last engine service: 1/29/15 Machine ran good Items Checked: Oil level - ok Grease cup - ok Bolts for tightness - ok Battery cover - ok Hoses and ball valves – ok Trailer FT-20I VIN (unable to read) License plate light broken and missing All other lights good All 4 tires in good condition Spare tire is new Overall Condition: Good Reel Carrier Model # RR-135 VIN A811158P136193 Some damage to both fenders All lights work properly Tires in good condition Hydraulic pumps working Overall Condition: Good

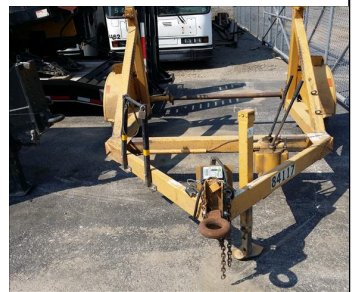
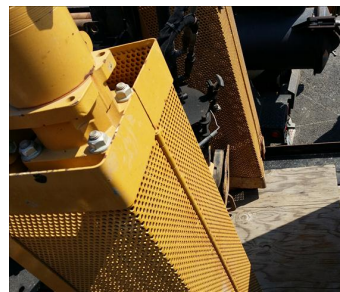
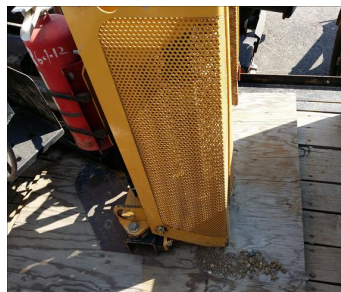
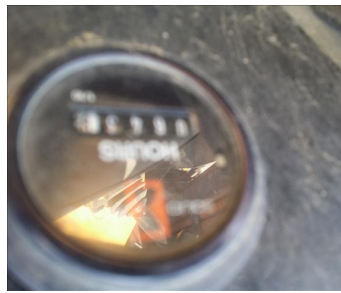
Additional Information

Physical Appearance
AFEquip.com is not responsible for hidden damages or mechanical failures as this is only a visual inspection

Mechanical Detail

A 4x4 grid of 16 photographs showing various views of a yellow Vermeer C340 trencher. The images include: 1. Front-left view of the machine. 2. Close-up of the cutting head and chain. 3. Side view of the machine. 4. Close-up of the rear wheel and track. 5. Side view of the machine on a flatbed trailer. 6. Close-up of the rear engine compartment. 7. Close-up of the operator's control panel with gauges and levers. 8. Close-up of the operator's seat and controls. 9. Close-up of the front grille and headlights. 10. Close-up of the rear engine compartment. 11. Close-up of the rear wheel and track. 12. Close-up of the rear engine compartment. 13. Close-up of the rear engine compartment. 14. Close-up of the rear engine compartment. 15. Close-up of the rear engine compartment. 16. Close-up of the rear engine compartment.

Images



Images

