

GENERAL EQUIPMENT INSPECTION DETAILS

This is an inspection that is completed by a contracted agency and represents a visual inspection of this equipment or property. Agency is not responsible for hidden damages or mechanical failures in the future of this equipment as this is a visual inspection. This inspection is completed without any warranty from the inspection. Whether it be "Expressed or Implied" This inspection report will follow with illustrations of the equipment and the written form of what we are able to visually inspect. By accepting this inspection or estimate you are agreeing indemnify, defend, save and hold harmless the the providing company of this repair/estimate, its agents and employees from all liabilities, charges, expenses and costs on account of or by reason of any such injuries, deaths, liabilities, claims, suits or losses however occurring or damages growing out of the same.

2005 M2

Ad Number # 8299
Year: 2005
Location: Washington
Manufacturer: Freightliner Trucks
Model: M2
VIN: HU10402
Engine: Caterpillar
Horsepower:
Transmission: Allison
Mileage: 225000
Hours:
ECM Mileage:0
ECM Hours:
Running:
Inspected By:



<http://afequip.nx.gg/view/listing/8299>

Description

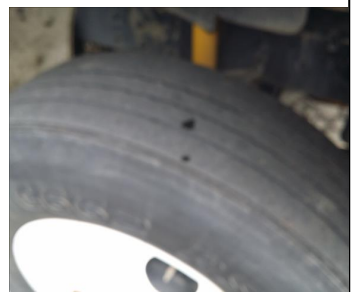
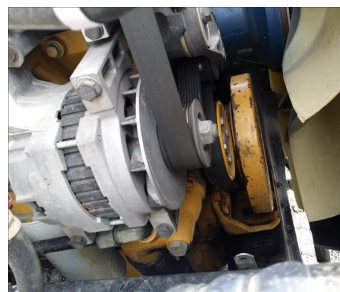
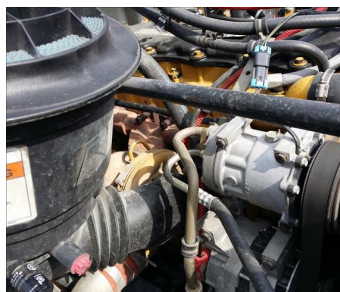
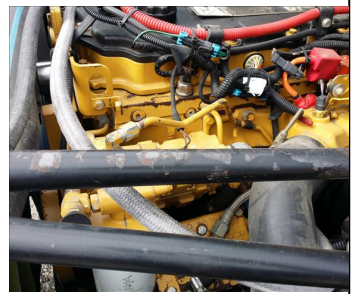
Mileage: 222,368 Engine" Cat C-7 - Diesel Transmission: Allison Automatic Front Axle: 12,000 Power Steering Rear Suspension: Capacity (2) 20,000 - Spring Air Brakes Fuel Tanks: Alum, Step, Capacity: 80 Conventional Cab AC and Heated Mirror, Cruise Control, AM/FM/Cassette, 26" Dry Box with Maxon 5000 lb rail gate Frame: Steel, standard length Wheels: Steel, painted, Bud Front Tires: less than 50% remaining, various brands, radials Rear Tires: less than 50% remaining, various brands, radials and recaps

Additional Information

Physical Appearance
AFEquip.com is not responsible for hidden damages or mechanical failures as this is only a visual inspection

Mechanical Detail

Images



Images

