

GENERAL EQUIPMENT INSPECTION DETAILS

This is an inspection that is completed by a contracted agency and represents a visual inspection of this equipment or property. Agency is not responsible for hidden damages or mechanical failures in the future of this equipment as this is a visual inspection. This inspection is completed without any warranty from the inspection. Whether it be "Expressed or Implied" This inspection report will follow with illustrations of the equipment and the written form of what we are able to visually inspect. By accepting this inspection or estimate you are agreeing indemnify, defend, save and hold harmless the the providing company of this repair/estimate, its agents and employees from all liabilities, charges, expenses and costs on account of or by reason of any such injuries, deaths, liabilities, claims, suits or losses however occurring or damages growing out of the same.

Vermeer Drill Rig

Ad Number # 8357
Year: 2011
Location: Indiana
Manufacturer: Vermeer
Model: D20X22II
VIN: MULTIPLE
Engine: Caterpillar
Horsepower:
Transmission: Not Applicable
Mileage: 0
Hours:
ECM Mileage:0
ECM Hours:
Running:
Inspected By:Company Rep



<http://afequip.nx.gg/view/listing/8357>

Description

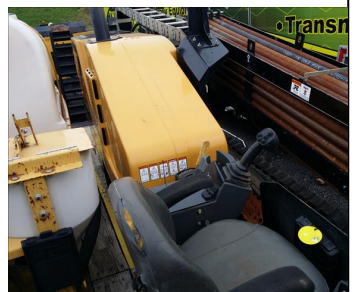
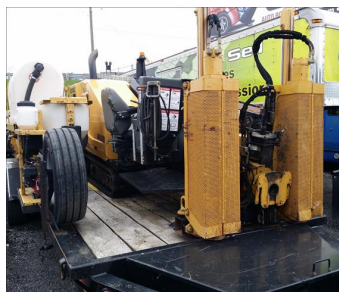
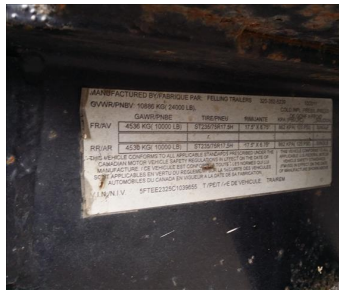
Units are off leases that are in GREAT condition. Please call us for details. Units are sold as a set of 1 VACUUM TANK SETUP 2 TRAILERS 1 MUD MIXER 1 DIRECTIONAL DRILL SERIAL NUMBERS LISTED BELOW D20X22 1VR6180T9C1000741 MX125 1VRX030UXC1002470 TRAILER 5FTEE2325C1039655 TRAILER 1M9FE1220BS284301 VACUUM McLaughlin Mode V800LE-HD410 V8H102411632

Additional Information

Physical Appearance
AFEquip.com is not responsible for hidden damages or mechanical failures as this is only a visual inspection

Mechanical Detail

Images



Images

