

GENERAL EQUIPMENT INSPECTION DETAILS

This is an inspection that is completed by a contracted agency and represents a visual inspection of this equipment or property. Agency is not responsible for hidden damages or mechanical failures in the future of this equipment as this is a visual inspection. This inspection is completed without any warranty from the inspection. Whether it be "Expressed or Implied" This inspection report will follow with illustrations of the equipment and the written form of what we are able to visually inspect. By accepting this inspection or estimate you are agreeing indemnify, defend, save and hold harmless the the providing company of this repair/estimate, its agents and employees from all liabilities, charges, expenses and costs on account of or by reason of any such injuries, deaths, liabilities, claims, suits or losses however occurring or damages growing out of the same.

2017 Temsa

Ad Number # 8445
Year: 2017
Location: Indiana
Manufacturer: Temsa Bus
Model: TS45
VIN:
Engine: Cummins
Horsepower:
Transmission: Allison
Mileage: 150000
Hours:
ECM Mileage:0
ECM Hours:
Running:
Inspected By:



<http://afequip.nx.gg/view/listing/8445>

Description

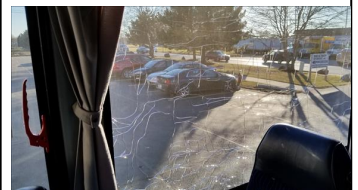
Asking \$249500.00 Coach is Located in Indiana, Good used clean bus. Commerical financing may be available with approved credit. Call Rod Daniels at 863-990-3775 or email at roddaniels@earthlink.net for details. 2017 TEMSA - BUS Error Code: 0 - VIN decoded clean. Check Digit (9th position) is correct
Manufacturer: TEMSA ULASIM ARACLARI SANAYI VE TICARET A.S. Vehicle Type: BUS Model Year: 2017
Make: TEMSA Model: TS45 Body Class: Bus Vehicle Image Other Information Information provided below is based on the details provided by the manufacturer of this vehicle to NHTSA in the part 565 submittal Bus Type: Bus Floor Configuration Type: Bus Length: Gross Vehicle Weight Rating: Drive Type: Cylinders: 6 Engine Brake (HP): 401 Engine Manufacturer: Cummins Primary Fuel Type: Diesel Engine Model: EPA15 Transmission Speed: Transmission Style: Engine Displacement (L): 11.9 Other Bus Info: Body - Decker: High Decker Stainless Steel, Motorcoach Airbags: Front: Knee: Side: Curtain: Seat Cushion: Other Restraint Info: Plant Information: Adana, Adana, Turkey

Additional Information

| |
|--|
| Physical Appearance |
| AFEquip.com is not responsible for hidden damages or mechanical failures as this is only a visual inspection |

Mechanical Detail

Images



Images

