

GENERAL EQUIPMENT INSPECTION DETAILS

This is an inspection that is completed by a contracted agency and represents a visual inspection of this equipment or property. Agency is not responsible for hidden damages or mechanical failures in the future of this equipment as this is a visual inspection. This inspection is completed without any warranty from the inspection. Whether it be "Expressed or Implied" This inspection report will follow with illustrations of the equipment and the written form of what we are able to visually inspect. By accepting this inspection or estimate you are agreeing indemnify, defend, save and hold harmless the the providing company of this repair/estimate, its agents and employees from all liabilities, charges, expenses and costs on account of or by reason of any such injuries, deaths, liabilities, claims, suits or losses however occurring or damages growing out of the same.

2016 MCI J4500 ADA Bus

Ad Number # 8456
Year: 2016
Location: California
Manufacturer: MCI Buses
Model: J4500
VIN: 2MG3JM8A3GW067505
Engine: Detroit
Horsepower:
Transmission: Allison
Mileage: 215400
Hours:
ECM Mileage:0
ECM Hours:
Running:
Inspected By:



<http://afequip.nx.gg/view/listing/8456>

Description

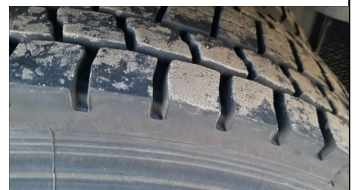
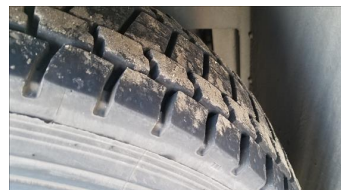
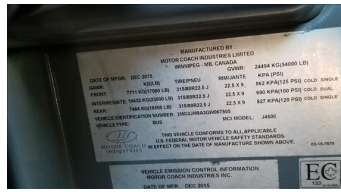
This is a unit ready for service. It was in daily usage and service until it was parked. All aspects of this equipment is is ready for service. This unit is DOT ready by replacing chipped windshields.

Additional Information

Physical Appearance
AFEquip.com is not responsible for hidden damages or mechanical failures as this is only a visual inspection

Mechanical Detail

Images



Images

