

GENERAL EQUIPMENT INSPECTION DETAILS

This is an inspection that is completed by a contracted agency and represents a visual inspection of this equipment or property. Agency is not responsible for hidden damages or mechanical failures in the future of this equipment as this is a visual inspection. This inspection is completed without any warranty from the inspection. Whether it be "Expressed or Implied" This inspection report will follow with illustrations of the equipment and the written form of what we are able to visually inspect. By accepting this inspection or estimate you are agreeing indemnify, defend, save and hold harmless the the providing company of this repair/estimate, its agents and employees from all liabilities, charges, expenses and costs on account of or by reason of any such injuries, deaths, liabilities, claims, suits or losses however occurring or damages growing out of the same.

SOLAR TARUS 70 TURBINE GENERATOR

Ad Number # 8138
Year: 2004
Location: Europe
Manufacturer: SOLAR TURBINE GENERATORS
Model: TARUS 70
VIN: OHI09B1544
Engine: TRUBINE
Horsepower: TURBINE
Transmission: SOLAR
Mileage: 2600
Hours:
ECM Mileage: 2600
ECM Hours:
Running: 1
Inspected By:



<http://afequip.nx.gg/view/listing/8138>

Description

Please call Vince at 317 938 2019 or email me at feroze.ohab@afohab.com for any information on this unit. We will ship anywhere in the world. This is an overhauled generator. It is 7.5MW. We can help with the setup and fire up of this machine if you need help. TAURUS 70 package main components to be assessed are as follows: • Gas turbine, 10301 AXI version, and serial NO. OHI09-B1544, 7,520 kWe and 15,143 rpm (50 Hz), single shaft, axial flow, compressor and combustor. • Gearbox serial NO. AUG09-65118 and assembly E330850-307, rated output speed 1,500 rpm. • Systems: electrical system (start-up switchboard and AC/DC power supplies), start system (composed of mechanical adapter, AC/DC controller and electrical start-up DC engine), fuel system, lubrication system, compressor water cleanup system, control system (of turbine, generator, synchronization and auxiliaries), remote control and monitoring systems, (combustion and ventilation) air ducts and filtration system, exhaust system and fire detection system. • Electric generator, LSA 56 BMBL13-41 type, manufactured in June of 2004 with NO 600165-1 powered 7,200 kW, with voltage output of 6,000 V at 50 Hz and 1,500 rpm; its weight is 18,600 kg. (Generator was sent to factory Overhaul and has 0 hours)

Additional Information

Physical Appearance
AFEquip.com is not responsible for hidden damages or mechanical failures as this is only a visual inspection

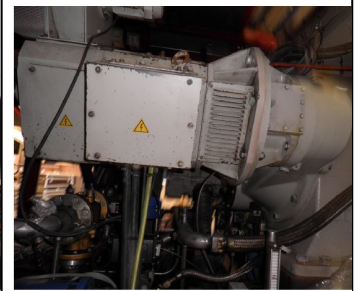
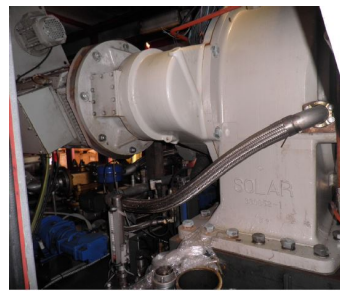
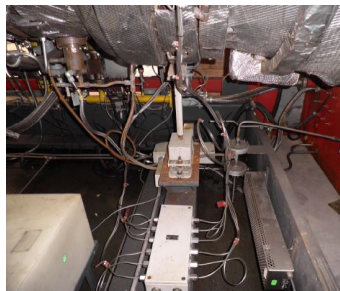
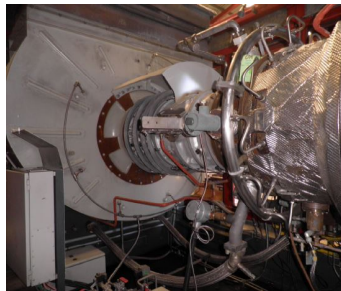
Mechanical Detail

Images

Solar Turbines	
A Caterpillar Company	
GAS TURBINE DATA PLATE	
MODEL NO.	TAURUS 70
VERSION	10301 AXI
ENGINE I.D.	EB10301-59G-H
SERIAL NO.	OHI09-B1544
*POWER (G/L)	7520 / NA kWe
NGP (RPM)	15158 60 HZ / 15143 50 HZ
NPT (RPM)	NA
IGV SETTING	+5.0 DEG
*TS BASE (G/L)	1349 °F / NA
SETPOINT (G/L) FULL LOAD	T5 1400 °F / NA
*EMISS SP (G/L)	NA
% PILOT (G/L) FULL LOAD	NA
% PILOT (G/L) PART LOAD	NA
*UNCOMPENSATED * ISO VALUES	
(G/L)=GAS/LIQUID, NA=NOT APPLICABLE	
1034040-966	



Solar Turbines	
A Caterpillar Company	
GEAR UNIT DATA PLATE	
GEAR UNIT	EB10301-59G-H
ASSEMBLY	EB10301-59G-H
SERIAL	EB10301-59G-H
GEAR TYPE	EB10301-59G-H
RATIO	EB10301-59G-H
RATED POWER	EB10301-59G-H
RATED INPUT SPEED	EB10301-59G-H
RATED OUTPUT SPEED	1500 RPM
OVERLOAD FACTOR	EB10301-59G-H
103404	



Images

