

GENERAL EQUIPMENT INSPECTION DETAILS

This is an inspection that is completed by a contracted agency and represents a visual inspection of this equipment or property. Agency is not responsible for hidden damages or mechanical failures in the future of this equipment as this is a visual inspection. This inspection is completed without any warranty from the inspection. Whether it be "Expressed or Implied" This inspection report will follow with illustrations of the equipment and the written form of what we are able to visually inspect. By accepting this inspection or estimate you are agreeing indemnify, defend, save and hold harmless the the providing company of this repair/estimate, its agents and employees from all liabilities, charges, expenses and costs on account of or by reason of any such injuries, deaths, liabilities, claims, suits or losses however occurring or damages growing out of the same.

2007 MCI J 4500

Ad Number # 8193
Year: 2007
Location: Pennsylvania
Manufacturer: MCI Buses
Model: J 4500
VIN: 2M93JMDA47W064027
Engine: Caterpillar
Horsepower:
Transmission: Auto Shift
Mileage: 401408
Hours:
ECM Mileage:0
ECM Hours:
Running:
Inspected By:



<http://afequip.nx.gg/view/listing/8193>

Description

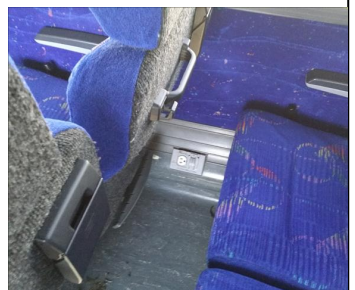
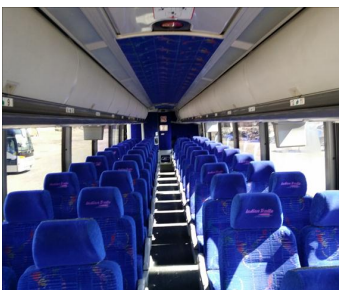
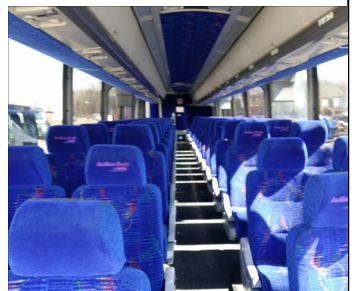
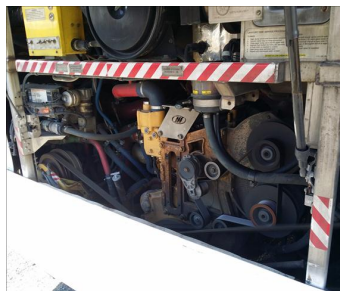
This fleet of buses are in great condition. All updates have been completed. They are ready to be in service. Buses have been upgraded with 110 volt outlets. Very little wear on these units. THIS IS A WHEELCHAIR LIFT BUS.

Additional Information

Physical Appearance
AFEquip.com is not responsible for hidden damages or mechanical failures as this is only a visual inspection

Mechanical Detail

Images



Images

