

GENERAL EQUIPMENT INSPECTION DETAILS

This is an inspection that is completed by a contracted agency and represents a visual inspection of this equipment or property. Agency is not responsible for hidden damages or mechanical failures in the future of this equipment as this is a visual inspection. This inspection is completed without any warranty from the inspection. Whether it be "Expressed or Implied" This inspection report will follow with illustrations of the equipment and the written form of what we are able to visually inspect. By accepting this inspection or estimate you are agreeing indemnify, defend, save and hold harmless the the providing company of this repair/estimate, its agents and employees from all liabilities, charges, expenses and costs on account of or by reason of any such injuries, deaths, liabilities, claims, suits or losses however occurring or damages growing out of the same.

2011 MCI J4500

Ad Number # 8278
Year: 2011
Location: Texas
Manufacturer: MCI Buses
Model: J4500
VIN: 2MG3JMHDA0BW065932
Engine: Detroit
Horsepower:
Transmission: ZF TRANSONIC
Mileage: 1098747
Hours:
ECM Mileage:0
ECM Hours:
Running:
Inspected By:VINCE OHAB



<http://afequip.nx.gg/view/listing/8278>

Description

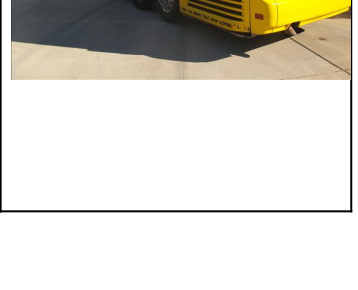
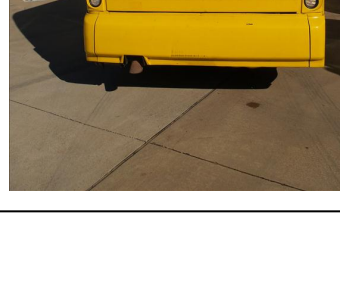
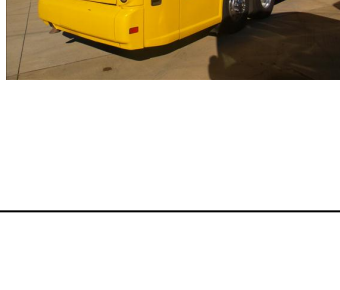
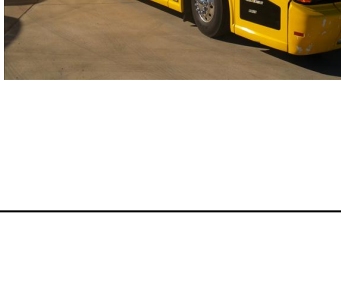
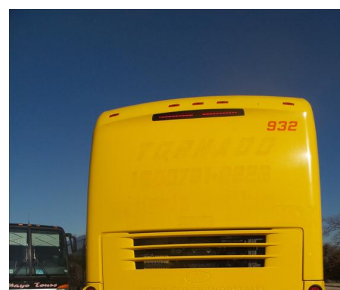
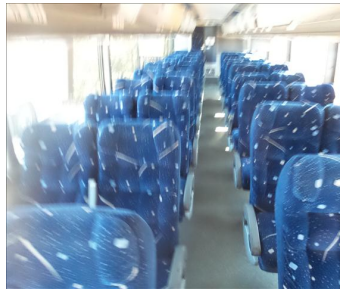
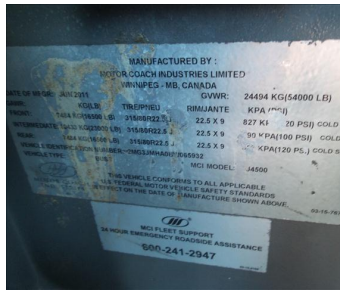
Well maintained fleet of buses. All buses are 100% corrosion free and have ran in the Texas to Mexico line haul. The entire fleet is good shape. All are mechanically sound. This ad is for one bus only and not all of them for the price shown. Units have wheelchair lifts.

Additional Information

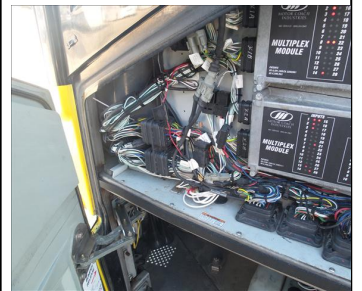
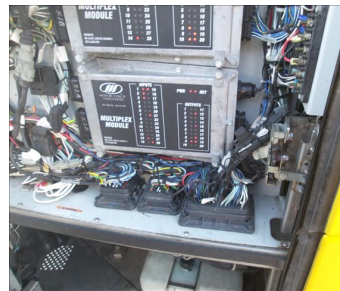
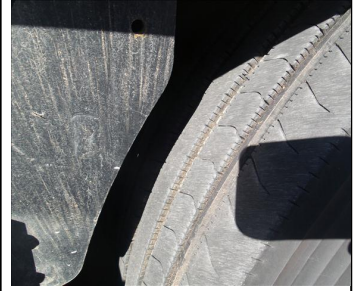
Physical Appearance
AFEquip.com is not responsible for hidden damages or mechanical failures as this is only a visual inspection

Mechanical Detail

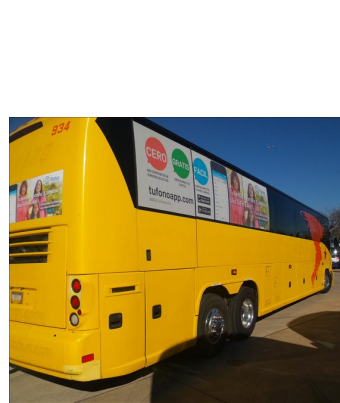
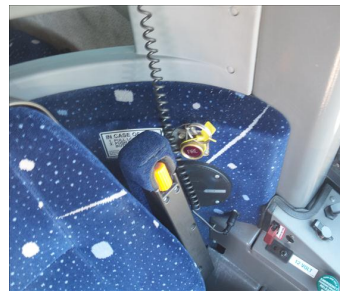
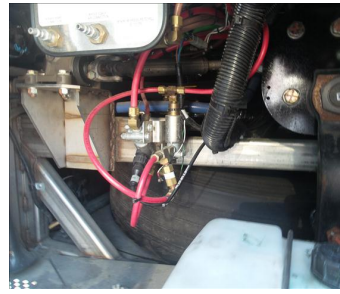
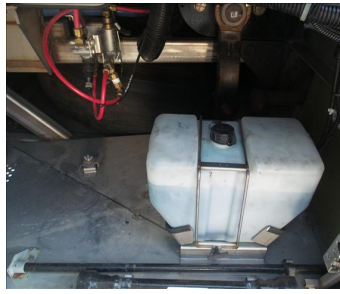
Images



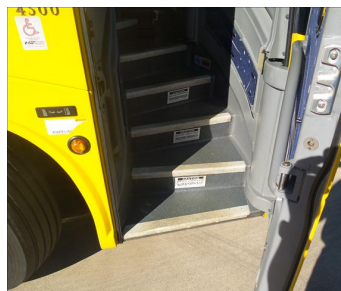
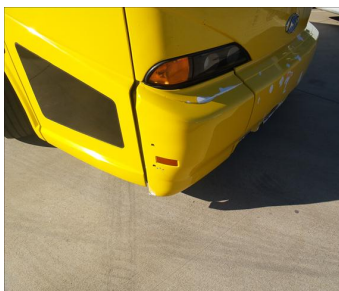
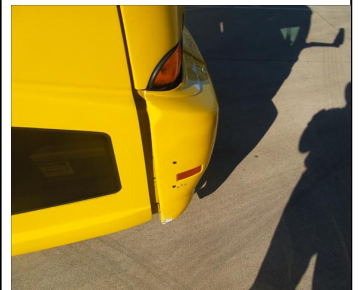
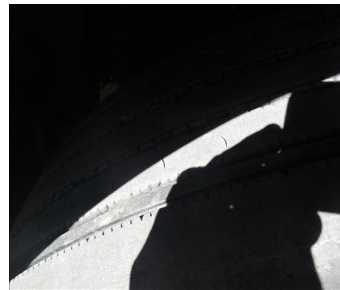
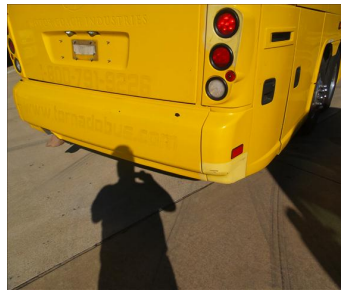
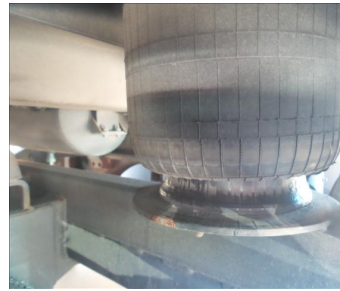
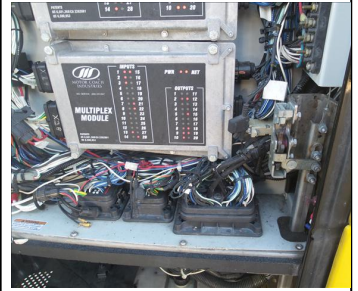
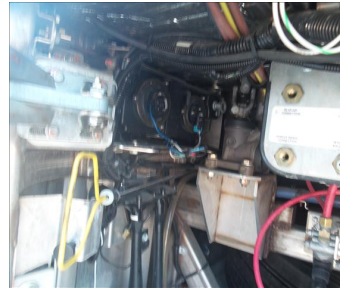
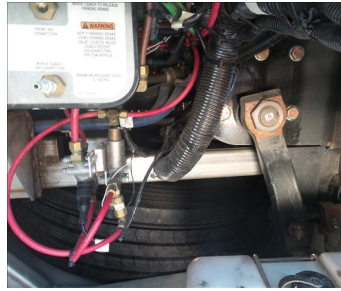
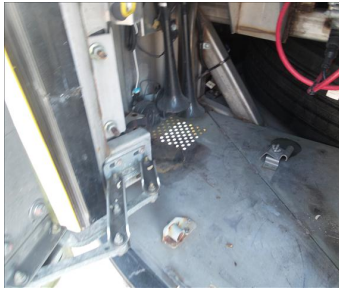
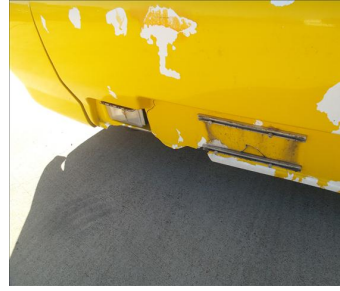
Images



Images



Images



Images

