

GENERAL EQUIPMENT INSPECTION DETAILS

This is an inspection that is completed by a contracted agency and represents a visual inspection of this equipment or property. Agency is not responsible for hidden damages or mechanical failures in the future of this equipment as this is a visual inspection. This inspection is completed without any warranty from the inspection. Whether it be "Expressed or Implied" This inspection report will follow with illustrations of the equipment and the written form of what we are able to visually inspect. By accepting this inspection or estimate you are agreeing indemnify, defend, save and hold harmless the the providing company of this repair/estimate, its agents and employees from all liabilities, charges, expenses and costs on account of or by reason of any such injuries, deaths, liabilities, claims, suits or losses however occurring or damages growing out of the same.

2005 SETRA

Ad Number # 8302
Year: 2005
Location: Indiana
Manufacturer: Setra Buses
Model: S417
VIN: WKKA34CD653000245
Engine: Detroit
Horsepower:
Transmission: Allison
Mileage: 490000
Hours:
ECM Mileage:0
ECM Hours:
Running:
Inspected By:



<http://afequip.nx.gg/view/listing/8302>

Description

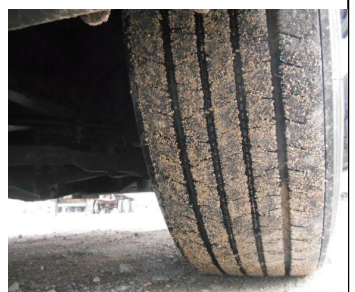
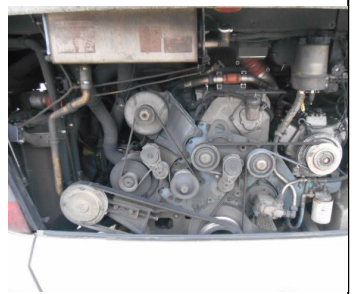
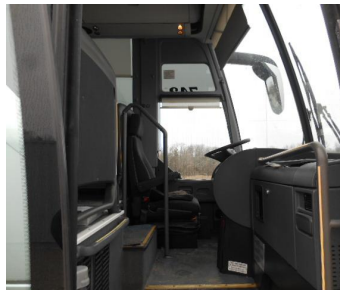
Cruise Control Air Conditioning Drives Power Steering Front Power Steering Rear Tag Bus Air Air Leveling System Air Dump Air Tag Power Mirrors Air Ride Drivers Seat Passenger Window Shades Passenger Foot Rests Lavatory Cassette Radio VCR CD Player Guide Microphone Drivers Microphone Passenger Reading Lights Thermopane Glass Passenger HeadRests Passenger ArmRests Tilt Telescopic Steering Wheel
Mileage: 486954 ECM: 0 Overall: OK

Additional Information

Physical Appearance
AFEquip.com is not responsible for hidden damages or mechanical failures as this is only a visual inspection

Mechanical Detail

Images



Images

